



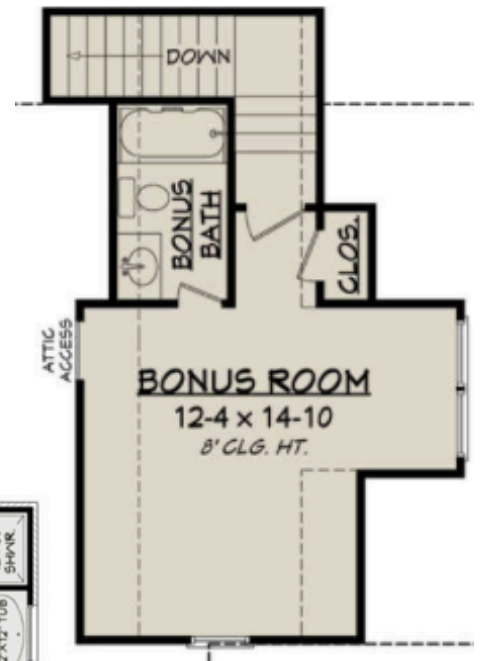
2,709 SQ. FT. | 4 BEDROOMS | 3.5 BATHS | BONUS WITH BATH

Custom exterior and interior finish options available including board and batten siding, carriage-style garage doors, black vinyl trim, LVP flooring, Shaker cabinets, Shower tile, and more!

2,709 SQ. FT. | 4 BEDROOMS | 3.5 BATHS | BONUS WITH BATH

STANDARD FEATURES

- Open floor plan
- Primary on main level
- 2 Addl BRs on main
- BR4/Office with closet
- Large Kitchen with pantry
- Large attic space above Garage
- Walk-in Closets
- Covered back porch



www.HanesMeadows.com



ANEWHOMES

For Details: 336.551.2134